

YEAR 2016

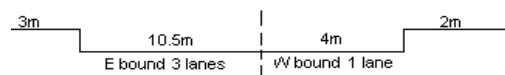
COVERAGE (B) STATION 4202

ROAD NETWORK MAJOR

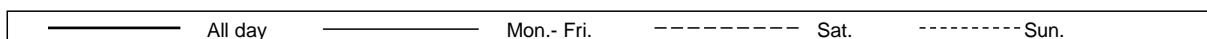
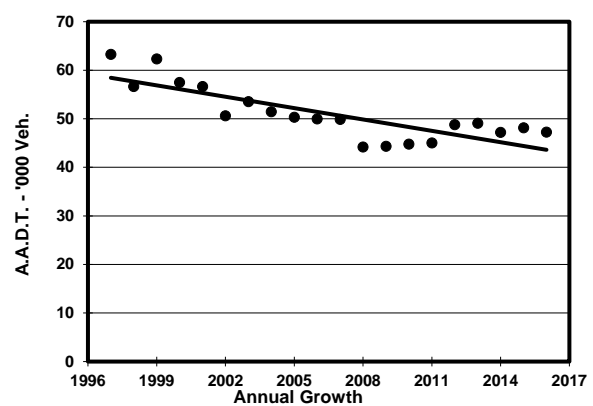
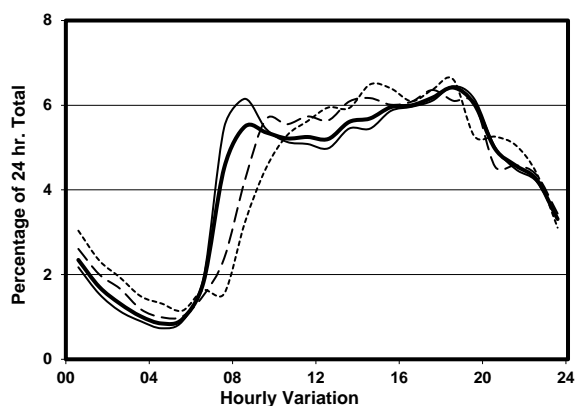
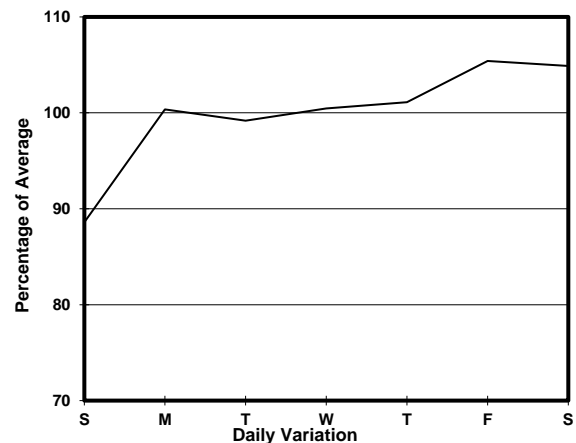
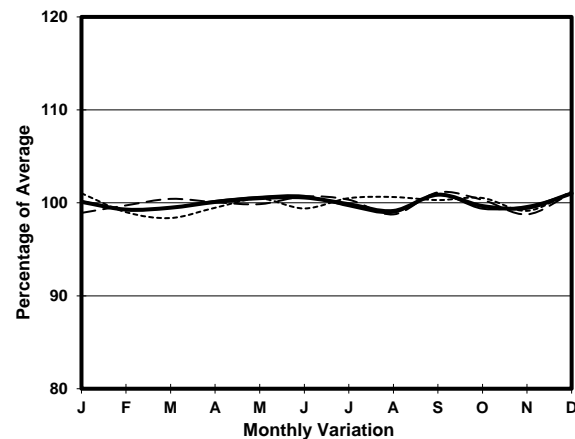
ROAD TYPE PRIMARY DISTRIBUTOR

LINK

BOUNDARY ST (from TAI HANG TUNG RD to EMBANKMENT RD)



1. TRAFFIC FLOW VARIATION AND GROWTH



2. TRAFFIC CHARACTERISTICS (BY DIRECTION)

Parameter	All - Day	Mon. - Fri.	Sat.	Sun.
EAST BOUND				
A.A.D.T.	40060	40790	42670	35500
R 12 / 24 - %	66.5	67.1	66	63.7
R 16 / 24 - %	86.4	87	85.4	83.7
AM Peak Hour	0800-0900	0800-0900	0900-1000	0900-1000
One-way flow at AM peak hour	2220	2520	2390	1560
T - % (AM)	-	4.2	-	-
PM Peak Hour	1800-1900	1800-1900	1700-1800	1800-1900
One-way flow at PM peak hour	2550	2580	2730	2350
T - % (PM)	-	3.7	-	-
Prop.of commercial vehicles - 16 hr.	-	5.1	-	-
WEST BOUND				
A.A.D.T.	7180	7360	7190	6610
R 12 / 24 - %	69	70.1	66.2	65.7
R 16 / 24 - %	88.5	89.4	86.6	85.6
AM Peak Hour	0700-0800	0700-0800	0900-1000	0900-1000
One-way flow at AM peak hour	400	500	440	340
T - % (AM)	-	15.9	-	-
PM Peak Hour	1800-1900	1800-1900	1700-1800	1800-1900
One-way flow at PM peak hour	490	530	450	440
T - % (PM)	-	3.4	-	-
Prop.of commercial vehicles - 16 hr.	-	5.8	-	-

3. OTHER INFORMATION AND COMMENT

Coverage (B) Station 4202
Year 2016

4. Vehicle classification and occupancy - Monday to Friday

Time		Class of vehicle									
		Motor	Private	Taxi	Private	PLB	Goods veh.		Non	Fr. Bus	
		Cycle	Car		LB		Light	M & H	Fr. Bus	SD	DD
0700-0800	Pro	3.8	28.3	31.4	10.0	6.7	8.9	1.1	7.4	0.5	2.0
	Ocp	1.1	1.5	2.2	9.8	12.4	1.4	1.2	21.5	20.2	43.3
0800-0900	Pro	2.2	47.7	21.3	3.3	4.1	17.4	0.8	1.5	0.3	1.5
	Ocp	1.0	1.3	2.2	6.9	14.0	1.8	1.6	22.1	17.1	34.6
0900-1000	Pro	4.1	40.6	27.0	1.5	4.1	19.0	0.8	1.0	0.3	1.7
	Ocp	1.1	1.3	2.1	1.6	8.9	1.5	1.0	6.3	10.3	24.1
1000-1100	Pro	2.5	36.5	25.5	1.1	5.4	22.9	2.3	1.5	0.3	1.9
	Ocp	1.1	1.4	1.9	4.7	7.8	1.5	1.3	2.0	12.6	23.5
1100-1200	Pro	2.3	38.8	25.8	2.3	6.1	18.9	1.1	2.5	0.3	2.0
	Ocp	1.2	1.4	1.9	1.8	6.8	1.4	1.3	8.1	15.6	30.8
1200-1300	Pro	2.8	46.6	22.4	1.7	4.9	15.0	2.2	2.3	0.2	1.8
	Ocp	1.1	1.5	2.0	4.5	8.5	1.5	1.6	10.0	14.8	31.1
1300-1400	Pro	2.6	44.0	21.9	5.0	2.9	17.5	1.5	2.6	0.2	1.9
	Ocp	1.0	1.6	2.1	4.3	11.1	1.5	1.6	3.1	14.2	32.8
1400-1500	Pro	2.7	39.4	26.3	2.3	3.7	18.7	2.3	2.6	0.3	1.6
	Ocp	1.1	1.5	2.1	2.3	9.0	1.7	1.1	3.8	13.0	34.6
1500-1600	Pro	2.6	45.5	22.1	3.9	3.7	16.8	1.8	1.7	0.2	1.7
	Ocp	1.1	1.4	2.1	8.8	11.4	1.5	1.3	9.8	15.9	44.5
1600-1700	Pro	1.1	50.1	23.0	3.3	3.8	13.3	0.7	2.6	0.3	1.7
	Ocp	1.0	1.4	1.9	4.8	13.3	1.4	1.0	1.5	18.8	51.9
1700-1800	Pro	4.4	47.6	26.7	2.2	2.3	12.4	1.3	1.1	0.2	1.8
	Ocp	1.0	1.5	2.1	5.2	15.2	1.5	1.6	5.4	19.5	58.1
1800-1900 Peak hour	Pro	3.5	54.7	24.4	0.8	3.9	9.1	0.4	1.3	0.2	1.8
	Ocp	1.1	1.4	2.1	1.7	15.6	1.4	1.3	5.6	22.8	66.8
1900-2000	Pro	2.8	57.6	25.2	0.1	3.2	7.6	0.4	0.6	0.3	2.0
	Ocp	1.2	1.4	2.2	3.0	15.6	1.4	1.0	1.0	11.9	59.3
2000-2100	Pro	3.1	50.3	30.0	0.0	4.7	7.8	0.3	1.1	0.3	2.3
	Ocp	1.1	1.6	2.0	0.0	12.3	1.6	1.0	8.4	7.4	36.9
2100-2200	Pro	4.0	48.6	31.3	0.0	4.6	7.8	0.2	0.7	0.4	2.3
	Ocp	1.2	1.5	2.1	0.0	12.5	1.6	1.0	1.0	5.8	52.3
2200-2300	Pro	3.4	51.8	34.6	0.0	3.7	3.0	0.0	0.6	0.3	2.6
	Ocp	1.2	1.6	2.0	0.0	10.1	1.2	0.0	2.7	11.7	48.8
16 hours	Pro	3.0	46.0	25.8	2.3	4.1	13.7	1.1	1.9	0.3	1.9
	Ocp	1.1	1.4	2.1	6.0	11.4	1.5	1.3	9.5	14.6	43.2

Legend

Pro. Proportion of vehicles in % (Sum may not add up to 100% due to figure rounding)*

Ocp. Average occupancy of vehicles including both driver and passengers*

M&H Medium and Heavy

* All traffic data are collected from combined bounds except for one way traffic